

DuPont™ Kapton® EN-A, EN-C, EN-Y, and EN-Z

Polyimide Film

Description

DuPont™ Kapton® EN-A, EN-C, EN-Y, and EN-Z are the premium performance polyimide films for use as a dielectric substrate for chip on film, flexible printed circuits and high density interconnects.

These polyimide films show superior surface quality, high modulus, and excellent CTE control, which makes them preferred dielectric films for very fine pitch circuitry and next generation IC packaging application

Applications

- Chip on Film (COF)
- Metallized FPC
- Semiconductor
- Package TFT

Key Features

- Very low surface roughness, ideal for sputtering processes
- Wide CTE line ups from ultra low to low, targetting to match various materials silicone, glass, and copper.
- Stable dimensional stability over wide temperature range

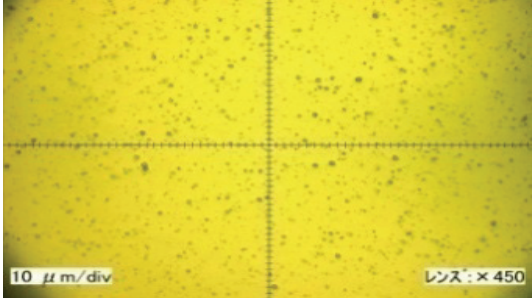
Typical Properties of Kapton® EN-A, EN-C, EN-Y and EN-Z Polyimide Films

Property	Unit	Direction	150EN-C	150EN-A	100EN-Y	140EN-Z	Test Method
			Normal CTE isotropic	Low CTE anisotropic	Ultra low CTE anisotropic	Ultra low CTE isotropic	
Thickness	µm	-	37.5	37.5	25.0	35.0	JIS K 7130
Tensile strength	MPa	MD	375	375	440	385	JIS K 7161
		TD	400	430	450	450	
Elongation	%	MD	80	85	70	70	JIS K 7161
		TD	65	60	65	55	
Modulus	GPa	MD	5.3	5.7	7.4	6.9	JIS K 7161
		TD	5.8	7.0	7.7	8.5	
Heat shrinkage [200 °C]	%	MD	0.01	0.01	0.01	0.01	JIS K 7133
		TD	0.01	0.01	0.01	0.01	
Tear strength - initial	N/2cm	MD	445	430	310	390	JIS C 2151
		TD	435	430	300	380	
CTE (50-200 °C)	ppm/°C	MD	16	12	5	7	JIS K 7197
		TD	13	5	4	2	
Surface roughness (Ra)	µm	-	0.01~0.03	0.01~0.03	0.01~0.03	0.01~0.03	JIS B 0601
Water absorption	%	-	1.9	2.1	2.3	2.3	JIS K 7209
Breakdown voltage	kV/mm	-	380	385	440	430	JIS C 2151
Flammability	UL-94	-	V-0	V-0	V-0	V-0	UL test method

DuPont™ Kapton® EN-A, EN-C, EN-Y, and EN-Z

Polyimide Film

Film surface (150EN)



Film surface (150EN-C, 150EN-A, 100EN-Y, 140EN-Z)



kapton.com

For more information on DuPont™ Kapton® polyimide films or other DuPont products, please visit our website.

The information provided in this data sheet corresponds to our knowledge on the subject at the date of its publication. It may be subject to revision as new knowledge and experience becomes available. This information is not intended to substitute for any testing you may need to conduct to determine for yourself the suitability of our products for your particular purposes. Since we cannot anticipate all variations in end-use and disposal conditions, DuPont makes no warranties and assumes no liability in connection with any use of this information. It is intended for use by persons having technical skill, at their own discretion and risk. Nothing in this publication is to be considered as a license to operate under or a recommendation to infringe any patent right.

CAUTION: Do not use in medical applications involving permanent implantation in the human body. For other medical applications, see "DuPont Medical Applications CAUTION" and "DuPont Medical Applications POLICY" statements. These documents are available upon request.

DuPont™, the DuPont Oval Logo, and all products, unless otherwise noted, denoted with ™, ® or ® are trademarks, service marks or registered trademarks of affiliates of DuPont de Nemours, Inc. Copyright © 2020 DuPont de Nemours Inc. All rights reserved.

EI-10172 (10/20)